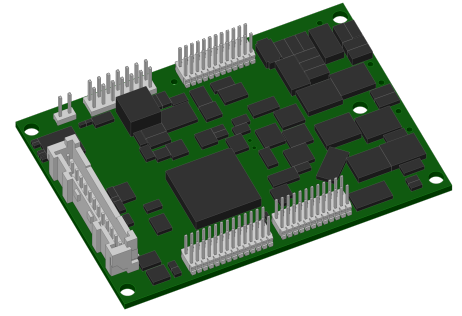


Servo amplifier

mcDSA-E30-Modul

Article number: 1514022

 Certification:  **E475093** *1


Picture similar

Technical data

Absolute maximum rating (destruction limits)	
Power supply voltage Up no polarity reversal protection	80 V
Continuous Electronic supply voltage Ue no polarity reversal protection	33 V
Short term peak voltage < 1s Ue no polarity reversal protection	37 V
Power	
Electronic supply voltage Ue	18..30 V
Electronic current consumption@ Ue=24V*2	typ. 45 mA
Power supply voltage Up	9..60 V
Max. output current	40 A
Continuous output current (certified UL)*3 @Up ≤ 24V @Up ≤ 60V	14.5 A 12.2 A
Continuous output current (not certified)*4 @Up ≤ 24V @Up ≤ 48V	15 A 14 A
PWM	
Output voltage	90% Up
PWM frequency	25, 32*5, 50 kHz
Mechanical	
Size LxWxH	70 x 50 x 13 mm
Weight	50 g
Environment	
Protection class	IP00
Ambient temperature (operation) (certified UL)	-40..40 °C
Ambient temperature (operation) (not certified)	-40..70 °C
Ambient temperature (storage)	-40..85 °C
Rel. humidity (non-condensing)	5..90 %
CAN bus	
Protocol	DS301
Device profile	DS402
Max. baudrate	1 Mbit/s
CAN specification	2.0B
Galvanically isolated	no

Sensor supply (Hall)	
Output voltage	5 V
Max. output current	0.05 A
Sensor supply (Encoder)	
Output voltage	5 V
Max. output current	0.2 A
Incremental encoder	
Type	incremental
Signals	A,/A,B,/B,Inx,/Inx
Max. frequency (per channel)	500 kHz
Input voltage	0..5 V
Signal type	differential, open collector, single ended
Hall sensors	
Signals	H1,H2,H3
Max. frequency (per channel)	10 kHz
Input voltage	0..5 V
Signal type	open collector, single ended
Digital inputs	
Number - digital inputs	8 (Din0..7)
Low voltage	0..5 V
High voltage	8..30 V
Digital outputs	
Number	3 (Dout0..2)
Continuous output current (certified UL)	1 A
Continuous output current (not certified)	1.5 A
Load Dout0..1	resistive, low inductive
Load Dout2	resistive, inductive
Output voltage	Electronic supply voltage Ue
Signal type	positive switching
Analog inputs	
Number	2 (Ain0..1)
Signal type - Ain	0..10 V, 12 Bit, single ended

*1 The certified performance data must be observed (see UL Instruction Note)

*2 power amplifier switched off, 5V output (sensor supply) is free

*3 connector cable with max. possible cable cross-section, PWM frequency 32 kHz (asymmetrical), ambient temperature 40 °C, I/O's and 5V output active, RMS current: 14.5 A → 12 Aeff, 12.2 A → 10 Aeff

*4 connector cable with max. possible cable cross-section, PWM frequency 32 kHz (asymmetrical), ambient temperature 40 °C, I/O's and 5V output free, RMS current: 15 A → 12.2 Aeff, 14 A → 11.4 Aeff

no guarantee, since value is determined empirical, please consider the application notes to determine the continuous current

*5 default value

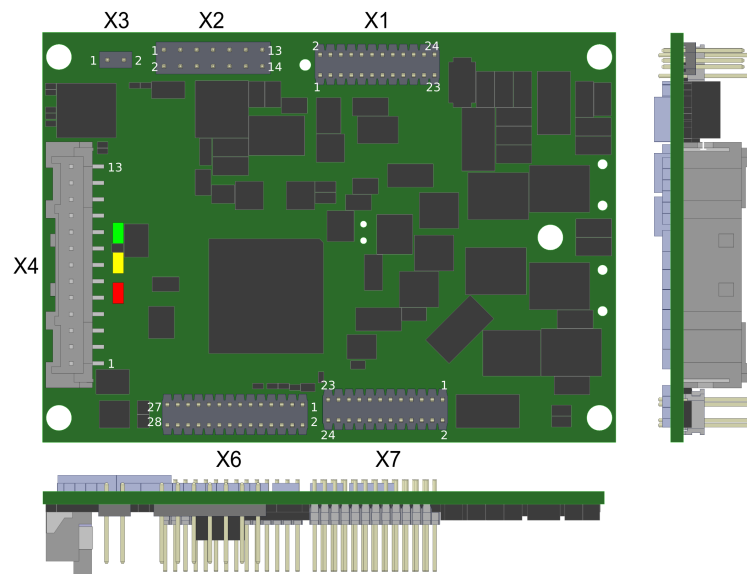
Additional technical data are available in mcManual.


 miControl® GmbH
 Chausseestraße 34
 14979 Großbeeren (bei Berlin)

 Web: www.miControl.de e-mail: info@miControl.de Tel.: +49 (3379) 312 59-0 Fax: +49 (3379) 312 59-19

 Copyright 2021 by miControl® - Modifications and errors excepted
 mcDSA-E30-Modul - PV1.08.00.00 / DV1.00.00.00

Scheme



©2020 by miControl

Terminal assignment

X1	Supply	
1	GND	Ground for electronic supply voltage
2	GND	Ground for electronic supply voltage
3	GND	Ground for electronic supply voltage
4	GND	Ground for electronic supply voltage
5	+Ue24V	Electronic supply voltage
6	+Ue24V	Electronic supply voltage
7	+Ue24V	Electronic supply voltage
8	+Ue24V	Electronic supply voltage
9	GND	Ground for power supply voltage
10	GND	Ground for power supply voltage
11	GND	Ground for power supply voltage
12	GND	Ground for power supply voltage
13	GND	Ground for power supply voltage
14	GND	Ground for power supply voltage
15	GND	Ground for power supply voltage
16	GND	Ground for power supply voltage
17	+Up	Power supply voltage
18	+Up	Power supply voltage
19	+Up	Power supply voltage
20	+Up	Power supply voltage
21	+Up	Power supply voltage
22	+Up	Power supply voltage
23	+Up	Power supply voltage
24	+Up	Power supply voltage

X2	Encoder	
1	res.	Reserved
2	res.	Reserved
3	res.	Reserved
4	res.	Reserved
5	res.	Reserved
6	GND	Ground for sensor supply Notice: don't connect with system GND
7	A	Inc. encoder, A channel
8	/A	Inc. encoder, A channel inverted
9	B	Inc. encoder, B channel
10	/B	Inc. encoder, B channel inverted
11	Inx	Inc. encoder, index channel
12	/Inx	Inc. encoder, index channel inverted
13	+5V	5V output voltage for sensor supply Sensors: encoder, SSI
14	GND	Ground for sensor supply Notice: don't connect with system GND
X3	PT1000	
1	PT_A	PT_A
2	PT_B	PT_B
X4	I/O's	
1	Din7	Digital input 7
2	Din0	Digital input 0
3	Din1	Digital input 1
4	Din2	Digital input 2
5	Din3	Digital input 3
6	Din4	Digital input 4
7	Din5	Digital input 5
8	Din6	Digital input 6
9	Ain0	Analog input 0
10	Ain1	Analog input 1
11	Dout0	Digital output 0
12	Dout1	Digital output 1
13	Dout2	Digital output 2

Terminal assignment

X6	Hall, inc. encoder, I/O's and CAN	
1	/SpiSS	mcSPI Slave Select
2	Erw2	mcSPI expansion signal 2
3	H1	Hall sensor 1
4	Erw1	mcSPI expansion signal 1
5	H2	Hall sensor 2
6	SpiCLK	mcSPI Clock
7	H3	Hall sensor 3
8	SPIMOSI	mcSPI Master Out Slave In
9	+U5V	5V output voltage for sensor supply Sensors: hall
10	Erw3	mcSPI expansion signal 3
11	GND	Ground for sensor supply Notice: don't connect with system GND
12	Erw4	mcSPI expansion signal 4
13	SpiMISO	mcSPI Master In Slave Out
14	Erw5	mcSPI expansion signal 5
15	/Id3	Node-ID Bit 3 inverted
16	/Id5	Node-ID Bit 5 inverted
17	/Id2	Node-ID Bit 2 inverted
18	/Id4	Node-ID Bit 4 inverted
19	/Id7	Node-ID Bit 7 inverted
20	/Id1	Node-ID Bit 1 inverted
21	/Id6	Node-ID Bit 6 inverted
22	/Id0	Node-ID Bit 0 inverted
23	CAN Hi	CAN High
24	PWR LED	Power LED
25	CAN Lo	CAN Low
26	ERROR LED	Error LED
27	CAN GND	CAN Ground
28	START LED	Start LED
X7	Motor	
1	Ma	Motor phase A
2	Ma	Motor phase A
3	Ma	Motor phase A
4	Ma	Motor phase A
5	Ma	Motor phase A
6	Ma	Motor phase A
7	Ma	Motor phase A
8	Ma	Motor phase A
9	Mb	Motor phase B
10	Mb	Motor phase B
11	Mb	Motor phase B
12	Mb	Motor phase B
13	Mb	Motor phase B
14	Mb	Motor phase B
15	Mb	Motor phase B
16	Mb	Motor phase B
17	Mc	Motor phase C
18	Mc	Motor phase C
19	Mc	Motor phase C
20	Mc	Motor phase C
21	Mc	Motor phase C
22	Mc	Motor phase C
23	Mc	Motor phase C
24	Mc	Motor phase C